

FILMOP TALK

ENVIRONMENT AND HEALTH: A RENEWED COMMITMENT

For Filmop, the calculation of the climate footprint of the trolleys in its range is a fundamental prerequisite for defining and implementing emission-offsetting... **pag 6**

A NEW SUCCESS ON THE MICROPLASTICS FRONT

In this respect, Filmop achieved significant results in the containment of microplastics: tests carried out by an independent laboratory according to... **pag 8**

FILMOP AND DME HONOURED AT EUROPRE 2025

Introduced for the first time at this edition of the fair, the 'Prevention of Occupational Risks' award is intended to highlight solutions that have... **pag 10**

DO YOU KNOW HOW TO REPLACE THE BLADES OF PLASTIC WINDOW SQUEEGEES?

Replacing the blades when worn extends the service life of the window squeegees of the Shine line indefinitely, thus representing an excellent... **pag 11**

POLISHING EQUIPMENT: THE TRENDS OF 2025 INTERVIEW WITH OUR EXPERTS

Ergonomics always arouses interest, both in floor polishing and in cleaning in general. The most structured companies are the ones that.. **pag 12**

PULIRE 2025: THE SHINE LINE STAGE

ISSA Pulire 2025 was the perfect opportunity to present Shine, the line dedicated to professional glass cleaning. The numerous visitors had the opportunity to see the new range in action, designed down to the smallest detail to ensure unrivalled results... **pag 4**



VISIT [FILMOP.COM](https://www.filmop.com) FOR MORE INFORMATION, NEWS AND INSIGHTS



8



4



6



11



12



10



SUSTAINABILITY AND SAFETY AT WORK

FROM GREEN COMMITMENT
TO RISK PREVENTION

Sustainability continues to be a central pillar in Filmop's corporate policies, an example being the carbon offset projects supported in 2025 and the achievements in containing microplastic pollution.

Similar attention is also paid to the prevention of occupational risks, as evidenced by the award received during the Europropre exhibition, which recognises the commitment to developing solutions that protect the health and well-being of operators.

This issue will also offer an in-depth look at the recent participation in the ISSA Pulire trade fair and the innovations previewed that are set to revolutionise window cleaning.

INDEX

4

**PULIRE 2025:
THE SHINE LINE
STAGE**

6

**ENVIRONMENT AND HEALTH:
A RENEWED COMMITMENT**

8

**A NEW SUCCESS ON THE
MICROPLASTICS FRONT**

10

**FILMOP AND DME HONoured
AT EUROPROPRe 2025**

11

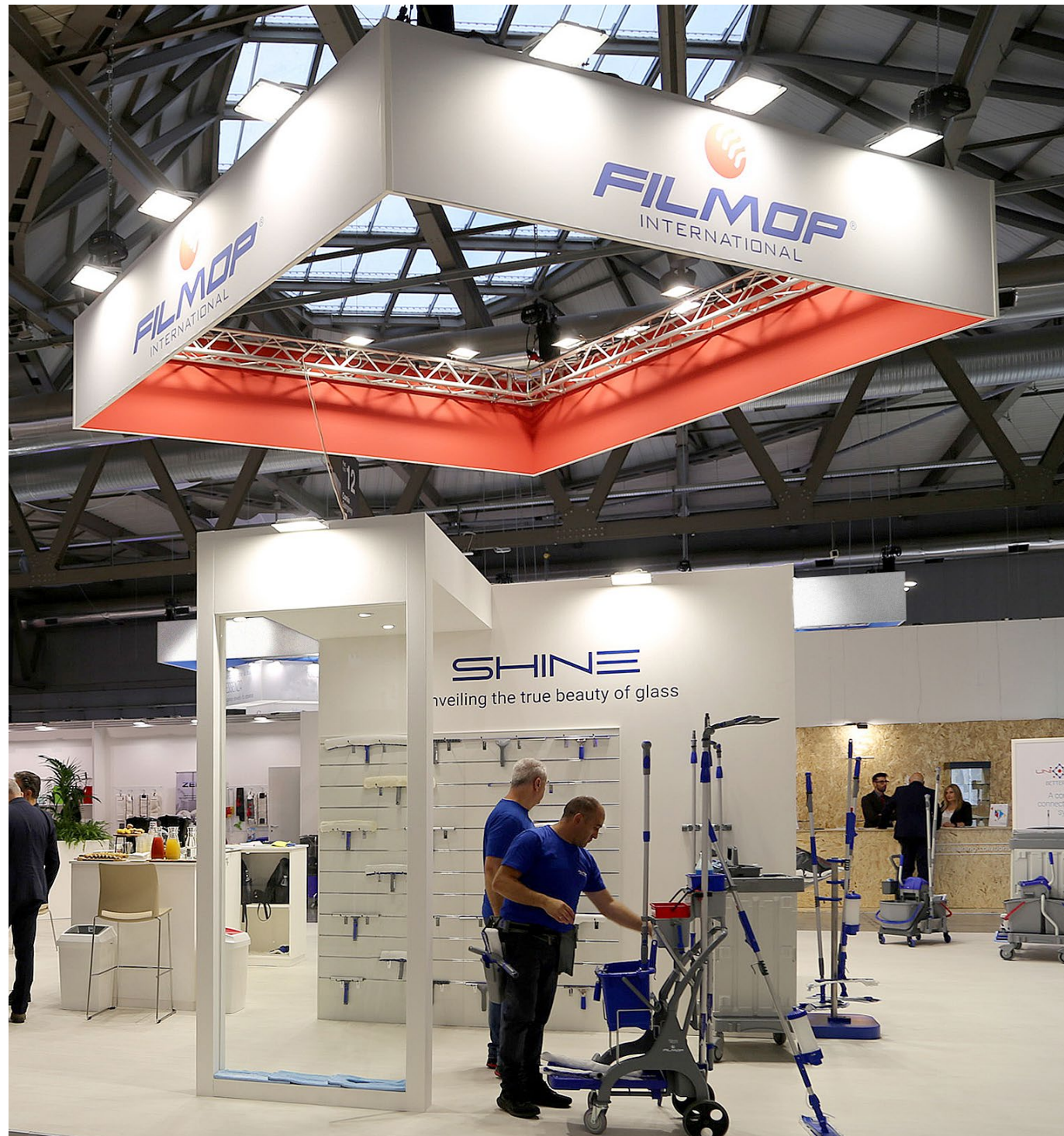
**DO YOU KNOW HOW TO REPLACE
THE BLADES OF PLASTIC
WINDOW SQUEEGEES?**

12

OUR EXPERTS

**POLISHING EQUIPMENT:
THE TRENDS OF 2025**

PULIRE 2025: THE SHINE LINE STAGE



ISSA Pulire 2025 was the perfect opportunity to present **Shine**, the line dedicated to professional glass cleaning. The numerous visitors had the opportunity to see the new range in action, designed down to the smallest detail to ensure unrivalled results.

YARNS AND BLADES FOR HIGHLY EFFECTIVE CLEANING

Window washers are characterised by their **high absorbency and cleaning power**, which ensures superior performance compared to conventional systems. There are three **yarns** in the range: **short** for effective cleaning without leaving halos or residue, **short with bristles** to maximise dirt removal, and **long** for longer washing time. The yarns are also available in a version with **abrasive fibre** to remove the most difficult dirt.



The window squeegee **blades**, on the other hand, are characterised by completely smooth, imperfection-free surfaces that allow the glass **to be cleaned on the first wipe**. The closed-cell natural rubber construction **prevents the build-up of dirt and bacteria**, thus raising hygiene standards.



INNOVATIONS THAT OPTIMISE OPERATIONS

The top models in the Shine line are the **articulated versions** of the **Clarus-W Master** support for window washer and the **Gloss-W Prime** window squeegee, which allow you to choose according to need whether to use the **tools freely articulated**, i.e. with an 'S' movement, or whether to **lock them in the standard central position or in any other position**.



Among the most outstanding products is also **Gloss-W Ambo**, a perfect symbiosis of the Clarus-W Master support for window washer and the Gloss-W Prime window squeegee that allows **one tool to be used for washing and drying**, thus speeding up operations.





ENVIRONMENT AND HEALTH: A RENEWED COMMITMENT

For Filmop, the calculation of the climate footprint of the trolleys in its range is a fundamental prerequisite for defining and implementing **emission-offsetting** strategies in line with its environmental sustainability commitments. To this end, Filmop has been supporting international **carbon offset programmes** since 2023, supporting projects that meet multiple **goals of the UN 2030 Agenda for Sustainable Development** including combating climate change, protecting ecosystems and improving health.

This year, Filmop chose to renew its support for the **Cordillera Azul conservation project**, a protected area of over 1,300,000 hectares in the heart of **Peru** threatened by deforestation. The initiative aims to **protect tropical forests and the rare species** that inhabit them, while promoting the **active participation of local communities** in sustainable land management.



Filmop also supported a second project in **Nigeria** to bring **energy-efficient stoves** to millions of households. The stoves provided **reduce indoor air pollution by 85 per cent** and **cut fuel consumption by more than 60 per cent**, generating environmental and economic benefits while improving the quality of life. Thanks to these measures, **800 tonnes of CO₂e have been offset**, adding to the 800 already offset.



Joining projects with high environmental and social value testifies to Filmop's commitment to **responsible growth**, in which **safeguarding the planet** and **protecting health** are the foundations of every strategic choice.

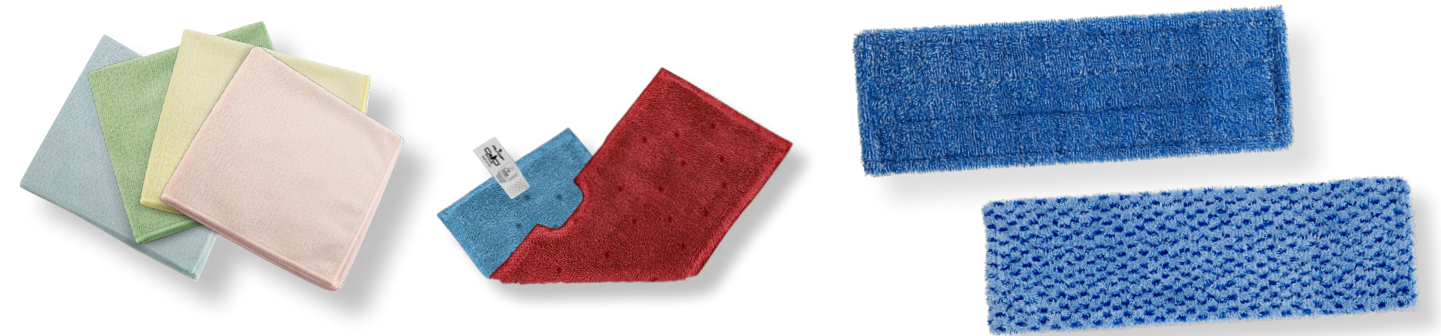
DISCOVER THE SUPPORTED PROJECTS



A NEW SUCCESS ON THE MICROPLASTICS FRONT

Microplastics are a growing concern for aquatic and terrestrial ecosystems and potential impacts on human health. According to the European Environment Agency (EEA), **between 200,000 and 500,000 tonnes of microplastics are released globally each year** from textiles made of synthetic fabrics. The amount of microplastics varies from textile to textile, **preferring high quality yarns** helps to minimise dispersion during washing and thus reduce environmental pollution.

In this respect, **Filmop achieved significant results in the containment of microplastics**: tests carried out by an independent laboratory according to ISO 4484-1 and 4484-2 on Eco **Multi-T**, **Duo Face Wash Basic**, **Puli-Brush** and **Puli-Scrub** mops revealed particularly low levels of microplastic release during washing and rinsing.



The same test had previously been conducted on the **Micro-Activa**, **Twist-Tuft**, **Rapido Super Extra**, **Rapido Super** and **Rapido** mops, and on that occasion too it had been passed with flying colours by all the products. The results confirm the **high quality** of Filmop's microfibres and their **low environmental impact** on this front too.



Their sustainability is evident right from the initial stages of the life cycle: the company's textile production benefits from **solar energy** obtained from the photovoltaic system installed at the headquarters, which has been in operation since 2011 and which **avoids the emission of tonnes of CO₂ into the atmosphere every year**. Furthermore, the quality of the yarns used guarantees **high resistance to washing** and a **long life span**, further contributing to reducing the environmental impact.

Even safer

The **automatic locking system** was originally designed for the **central ring cover** of **Alpha** trolleys and is now also available for the **door**, thus raising the overall level of security. The mechanism is **instantly activated** when the door is closed or the cover is lowered, **preventing any unauthorised access** to the respective compartments. The **universal key** provided allows only the operators to open the door and cover if necessary so that they can access the contents of the trolley.

[DOWNLOAD THE CATALOGUE](#)



FILMOP AND DME HONOURRED AT EUROPROPRE 2025

The combined efforts of **Filmop** and **DME** in **occupational risk prevention** were rewarded at the **Europropre** trade fair held in Paris from 25 to 27 March, this year reaching its 18th edition.

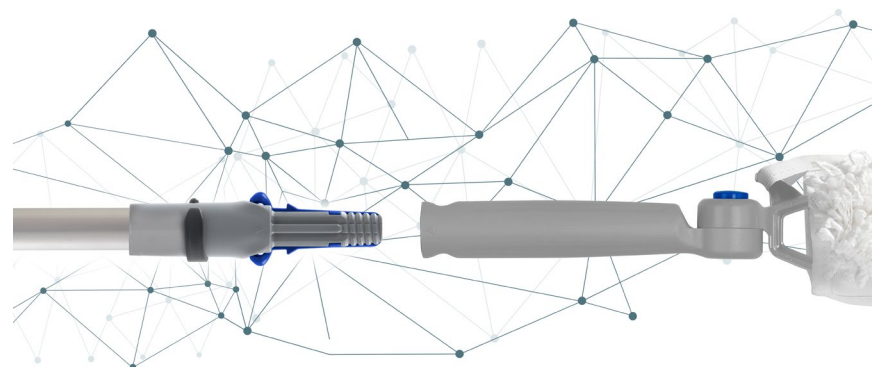
The Fédération des Entreprises de Propreté, d'Hygiène et Services Associés (FEP), in collaboration with AG2R La Mondiale, awarded the prize to **Uni-Connect**, the system that **instantly and safely connects all the equipment** required for complete environment cleaning, allowing operators to use just one handle to reach every surface, from glass to floors.

Uni-Connect **makes operations easier and safer at the same time**, preventing fatigue and the risk of injury.



Introduced for the first time at this edition of the fair, the 'Prevention of Occupational Risks' award is intended to highlight solutions that have distinguished themselves in **improving working conditions**, protecting the health, well-being and safety of operators. The realisation of Uni-Connect represents a **significant step in this direction**, responding to one of the most relevant and current challenges of the professional cleaning sector.

"This recognition is a great satisfaction for us," commented Francesca Zorzo, brand manager of Filmop. "It represents the synthesis of years of work and research and encourages us to continue on this path, investing in the development of cleaning systems that are not only effective and efficient but also ergonomic to protect the health of those who work day after day to ensure clean and healthy environments."



UNI-CONNECT
BETTER TOGETHER

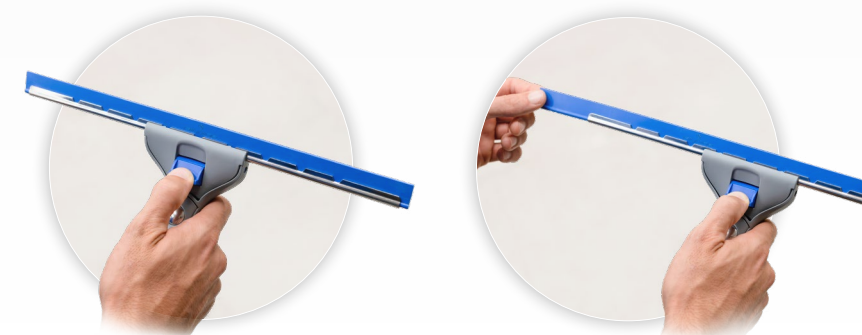
DISCOVER UNI-CONNECT

DO YOU KNOW HOW TO REPLACE THE BLADES OF PLASTIC WINDOW SQUEEGEES?

The **Gloss-W Prime**, **Gloss-W Prime jointed** and **Gloss-W Ambo** window squeegees stand out for an **innovative system** that makes **blade replacement extremely quick and easy**, with significant time and energy savings.

The replacement procedure requires just a few simple steps: first of all, you have to **pull the retractable button** outwards to activate it. Then, simply **press it lightly to release the blade** from the support, which remains attached. A stronger push, on the other hand, allows the support to be released, requiring **30 % less effort** than the same operation with traditional steel squeegees. Once the blade has been replaced, the **retractable button must be pushed** to deactivate it by retracting it into the squeegee head. It will then remain available and ready for the next use, however without hindering window cleaning operations in the meantime.

Replacing the blades when worn **extends the service life of the window squeegees** of the Shine line indefinitely, thus representing an excellent investment. Made of natural rubber and available in blue and black, they undergo a **vulcanisation treatment** that **increases their resistance and thus their durability**.



PATENT PENDING



OUR EXPERTS

POLISHING EQUIPMENT: THE TRENDS OF 2025

In the Interclean “Top 10 Trends for 2025” report, an increased demand for cleaning equipment that reduces strain on the part of the operator is predicted. Do you see this trend emerging in the floor polishing sector?

Ergonomics always arouses interest, both in floor polishing and in cleaning in general. The most structured companies are the ones that mainly use ergonomic equipment with the aim of reducing the occurrence of work-related diseases and illnesses as much as possible, thereby also minimising the associated costs.

Also predicted is a move towards the use of user-friendly cleaning solutions. Have you noticed this trend?

A trend that knows no crisis is undoubtedly that of user-friendly cleaning solutions, which first and foremost facilitate training and greatly reduce the possibility of making mistakes during use. Instead, equipment with a less user-friendly design turns out to be much less intuitive and much more complicated, which also has a negative impact on productivity.

What products does Filmop offer that make floor polishing easier and safer for the operator?

When it comes to floor polishing, Filmop's flagship is undoubtedly Unilav Side Grip. Our wax spreader has a convenient 1-litre bottle that can be refilled indefinitely, a side dispensing knob that allows you to adjust the wax release, and a mop holder with hooks that ensure maximum adhesion to the mop. Lightweight and practical, Unilav Side Grip makes polishing floors easier and faster, thus reducing the time and cost of operations. It also eases the task for the operator, who does not have to lift heavy buckets or continually raise and lower the tool to dip it in the wax and then place it back on the ground. This is also a gain in terms of safety, as it eliminates the presence of sleeve washing buckets on which the operator might accidentally trip over and injure himself during operation.

Have you noticed an increasing demand for floor polishing products and systems that offer sustainability benefits, as highlighted in the trends report?

Sustainability continues to drive the choice of equipment, even in the area of floor polishing. The demand for environmentally sustainable solutions is transversal and touches all areas of professional cleaning, which is increasingly focused on environmental protection.

Do the solutions of Filmop for floor polishing have environmental benefits?

Being a manual equipment, Unilav Side Grip does not require the use of electricity and is therefore much less impacting than floor polishing machines. Moreover, unlike traditional bucket systems that force you to throw away the leftover wax, Unilav Side Grip allows you to dose it according to your actual needs, preserving the rest inside the sealed bottle ready for the next use. Transparent and graduated, the bottle allows control of the quantity of product available. Used with the Smart-Fur cloth, Unilav Side Grip guarantees excellent performance. The special microfibre with short yarn is unbeatable in the application of wax, not only the glossy wax but also the widely requested matt-finish wax, which is generally more difficult to apply because it is denser. Even the Smart-Fur mop is environmentally friendly: it is made by benefiting from solar energy from photovoltaic systems installed in 2011 and ensures a long life cycle and thus a lower consumption of resources.

Have you noticed any other market trends? If so, which ones?

Ergonomics, usability and sustainability continue to be the main trends of recent years and the ones that are destined to last, driving customer choices.





FILMOPTALK

FILMOP INTERNATIONAL SRL
Via dell'Artigianato, 10/11
35010 VILLA DEL CONTE
Padova - Italy

Tel. +39 049 9325066
Fax +39 049 9325317

filmop@filmop.com
www.filmop.com