

# FILMOP TALK

## HIGHEST FREEDOM OF MOVEMENT WITH LINK-UP

Thanks to Link-Up, the innovative hook system designed by Filmop, the operator can separate the bag holder area from the rest of the trolley anytime and... **pag 6**

## WASH AND DRY WITH ONE TOOL

A perfect symbiosis between the Clarus-W Master aluminium support for window washer and Gloss-W Prime plastic window squeegee, Gloss-W Ambo... **pag 8**

## FILMOP MAXIMISES SECURITY

The automatic locking system of the Alpha trolleys raises the safety level of the cleaning service to the highest level. The new system is designed to... **pag 10**

## DO YOU KNOW HOW TO USE GLOSS-W PRIME JOINTED?

Gloss-W Prime jointed combines the advantages of the fixed version of the plastic squeegee with a rotation angle of up to 150°, freely lockable at... **pag 11**

## THE CHOICE OF FLOORING BETWEEN STRENGTHS AND WEAKNESSES

INTERVIEW WITH OUR EXPERTS

There are many types of flooring, each with its own technical and aesthetic characteristics, which can be used to guide the choice according to specific... **pag 12**

## FILMOP AGAIN SILVER MEDAL ECOVADIS

For the third year running, Filmop has been awarded the prestigious EcoVadis silver medal, an important recognition awarded after a careful evaluation of the company's performance in four areas considered of primary importance in terms of sustainability and transparency... **pag 4**

**SILVER | Top 15%**

**ecovadis**

Sustainability Rating

**DEC 2024**





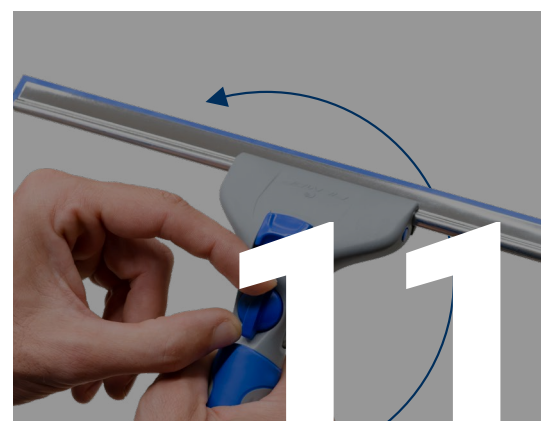
8



4



6



11



12



10

# INDEX

4

**FILMOP AGAIN  
SILVER MEDAL ECOVADIS**

6

**HIGHEST FREEDOM  
OF MOVEMENT WITH LINK-UP**

8

**WASH AND DRY  
WITH ONE TOOL**

10

**FILMOP  
MAXIMISES SECURITY**

11

**DO YOU KNOW HOW TO USE  
GLOSS-W PRIME JOINTED?**

12

**OUR EXPERTS**

**THE CHOICE OF FLOORING BETWEEN  
STRENGTHS AND WEAKNESSES**



## NEW MILESTONES AND INNOVATIONS

PROMOTING SUSTAINABILITY,  
INNOVATING TO EXCEL

The year 2024 ended with a new award for Filmop, whose good business practices were once again honoured by EcoVadis, the leading provider of corporate sustainability ratings. The new issue of the year therefore aims to celebrate with a dedicated article this new milestone to be proud of.

Not only Corporate Social Responsibility will be discussed, but also Filmop's offer will be given plenty of space, going into the new solutions for effective and efficient window cleaning and the innovations that make Alpha trolleys even more functional and safe.

We will conclude the issue with the usual interview with the experts, a regular feature of every issue, which will focus this time on the choice of flooring, taking into consideration advantages and criticalities.



# FILMOP AGAIN SILVER MEDAL ECOVADIS

For the third year running, Filmop has been awarded the prestigious **EcoVadis silver medal**, an important recognition awarded after a careful evaluation of the company's performance in four areas considered of primary importance in terms of sustainability and transparency: **Environment, Labour and Human Rights, Ethics and Sustainable Procurement**.

A reliable and globally recognised assessment conducted by industry experts and based on **international standards** including the Global Reporting Initiative, the UN Global Compact and ISO 26000.



## See you at... ISSA Pulire!

The long-awaited edition of **ISSA Pulire**, the international trade fair entirely dedicated to professional cleaning and sanitising, is back. Now in its 27th edition, **from 27 to 29 May 2025** it will become the reference point for an increasingly strategic sector that will meet in the Fieramilano exhibition centre in Rho.

Filmop will be present with its stand full of solutions for effective and efficient cleaning. In particular, Pulire will be the perfect occasion to **present the brand new line dedicated to window cleaning**, designed down to the smallest detail to excel in terms of performance and ergonomics.

To register

[CLICK HERE](#)





# HIGHEST FREEDOM OF MOVEMENT WITH LINK-UP

Thanks to **Link-Up**, the innovative **hook system** designed by Filmop, the operator can **separate the bag holder area from the rest of the trolley** anytime and with one simple movement. Doing so, the collection unit is independent, transforming it into an **extremely compact cleaning station** that makes waste or used linen collection easier and quicker and allows **easy access even in the tightest spaces** such as lifts, small corridors and laundry rooms.

The Link-Up system is the ideal solution in all environments where cleaning requires a **trolley complete with collection, storage and washing area**, while at the same time **allowing the units to be independent** so as to maximise freedom of movement.



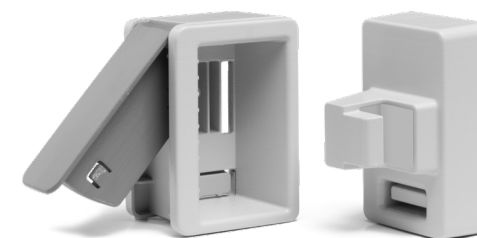
The hooks follow the trolley over **every floor, even the most uneven ones**, always ensuring smooth movement. They also keep the collection area far enough away from the storage area to avoid any interference between the respective wheels. Finally, they are so designed that they **always remain secured** to the trolley vertical frames and **avoid accidental release** from the units.



The wide range of **Alpha** trolleys includes **five Link-Up versions**, whose configurations have been specially designed to meet every cleaning need, allowing a choice between **washing** with **Boost** wringer, **pre-soaking** with **Top-Down** hermetic buckets and **soaking on-demand** with the mechanical **Equodose** dosing device.



The hook kit is also available as a separate accessory, **compatible with the entire Alpha trolley line**.



**PATENTED SYSTEM**





# WASH AND DRY WITH ONE TOOL

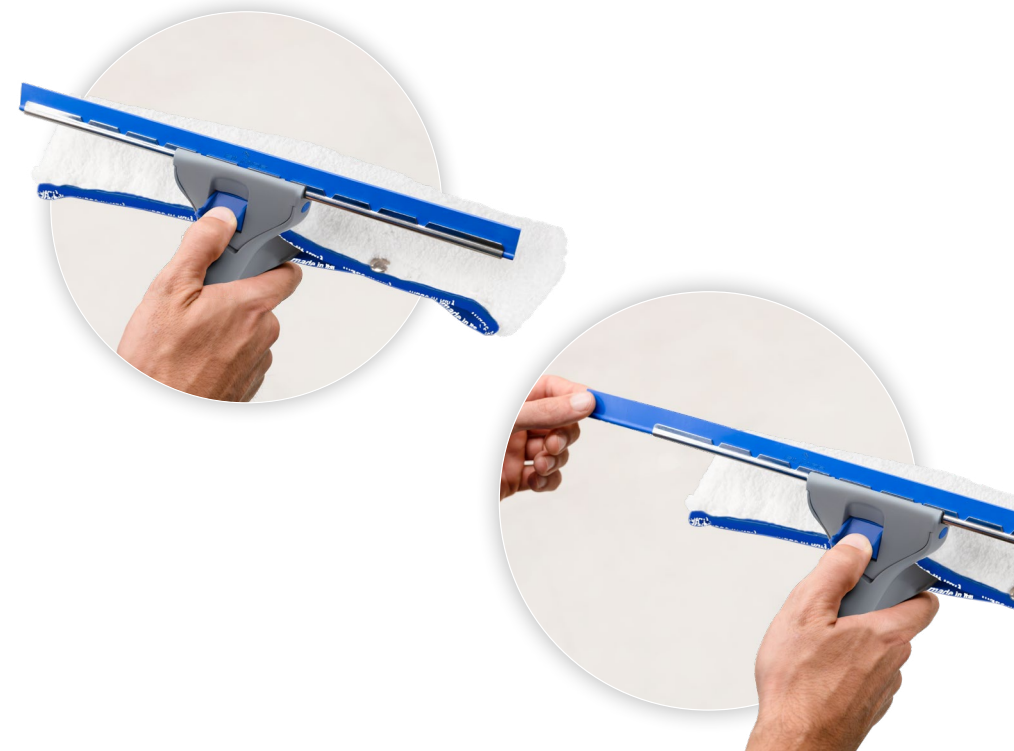
A perfect symbiosis between the Clarus-W Master aluminium support for window washer and Gloss-W Prime plastic window squeegee, **Gloss-W Ambo** allows you to use **only one tool for washing and drying glass surfaces**, thus speeding up operations. This saves considerable time, as well as providing highly effective cleaning.

Gloss-W Ambo **works in synergy with the window washers** in the range, which are available in **three versions with or without abrasive fibre** to meet every need. With Gloss-W Ambo, the washer adheres completely to the surface, making **dirt removal faster and more effective**. Similarly, the completely smooth, imperfection-free blade **wipes the surface perfectly in a single pass**, further optimising operating times. The fixed 30° working angle provides additional efficiency, maximising performance and user comfort.



Not only effective and efficient, Gloss-W Ambo is also incredibly ergonomic: the high-quality plastic, aluminium and stainless steel structure makes it **particularly light and robust**, while the length of the handle and the characteristic design have been specially developed to **promote comfortable use and reduce fatigue**.

**Replacing the blade is also quick and easy** with Gloss-W Ambo: unlike conventional steel window squeegees, just press the button lightly to remove the blade, without any effort required from the operator.



Like the supports for window washer and the window squeegees of the Shine line, Gloss-W Ambo is also **compatible with the Uni-Connect system** and in general with handles and poles equipped with an **Italian thread**.





# FILMOP MAXIMISES SECURITY

**NEW**



The **automatic locking system** of the **Alpha** trolleys raises the safety level of the cleaning service to the highest level. The new system is designed to **instantly lock the cover when closed**, preventing unauthorised access to equipment, chemicals and general material stored in the **central ring**.

The system designed by Filmop does not require any cumbersome or complicated procedures, but only one simple gesture: simply **lower the cover to activate the instant lock** and thus secure the trolley.

Reopening is then only possible by inserting the special **universal key** in the lock, so that only authorised personnel can access the contents of the central ring. After use, the operator can conveniently store the key in its own **compartment** in the trolley door.



Lower the cover to lock it



Enter the appropriate key to reopen it



Put the key back in its compartment

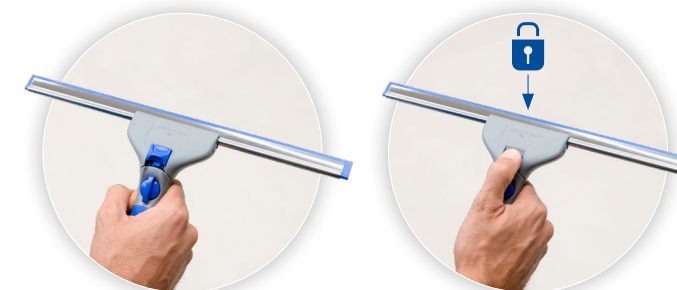
# DO YOU KNOW HOW TO USE GLOSS-W PRIME JOINTED?



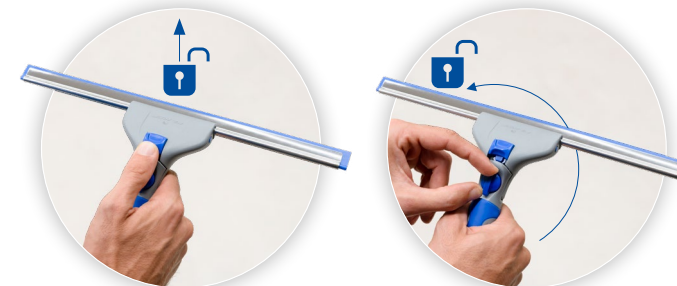
**Gloss-W Prime jointed** combines the advantages of the fixed version of the plastic squeegee with a **rotation angle of up to 150°**, freely lockable at any angle.

The top of the Shine range allows the operator to **choose how to use it, changing the setting as required**. The operator can decide to work with the tool freely articulated, i.e. with an 'S' movement, or lock it in the standard central position or in any other position by simply acting on the **button on the head** and the **central knob on the handle**. The procedure changes depending on what you want to achieve, but is always simple and immediate.

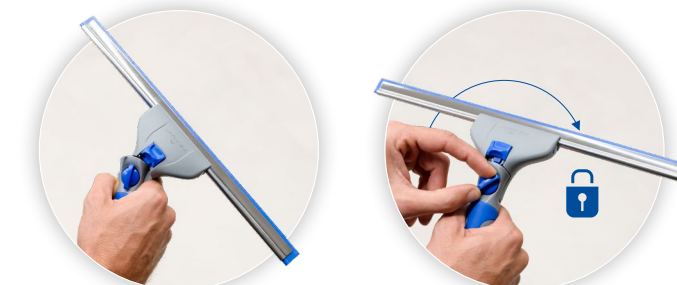
To **use the squeegee in the standard position**, simply position the squeegee head in a central position in relation to the handle and lock it in place by pressing the button downwards.



On the other hand, to let the **squeegee freely articulated**, push the head button upwards to deactivate the central position and then turn the handle knob to the left to unlock the head, thus leaving it free.

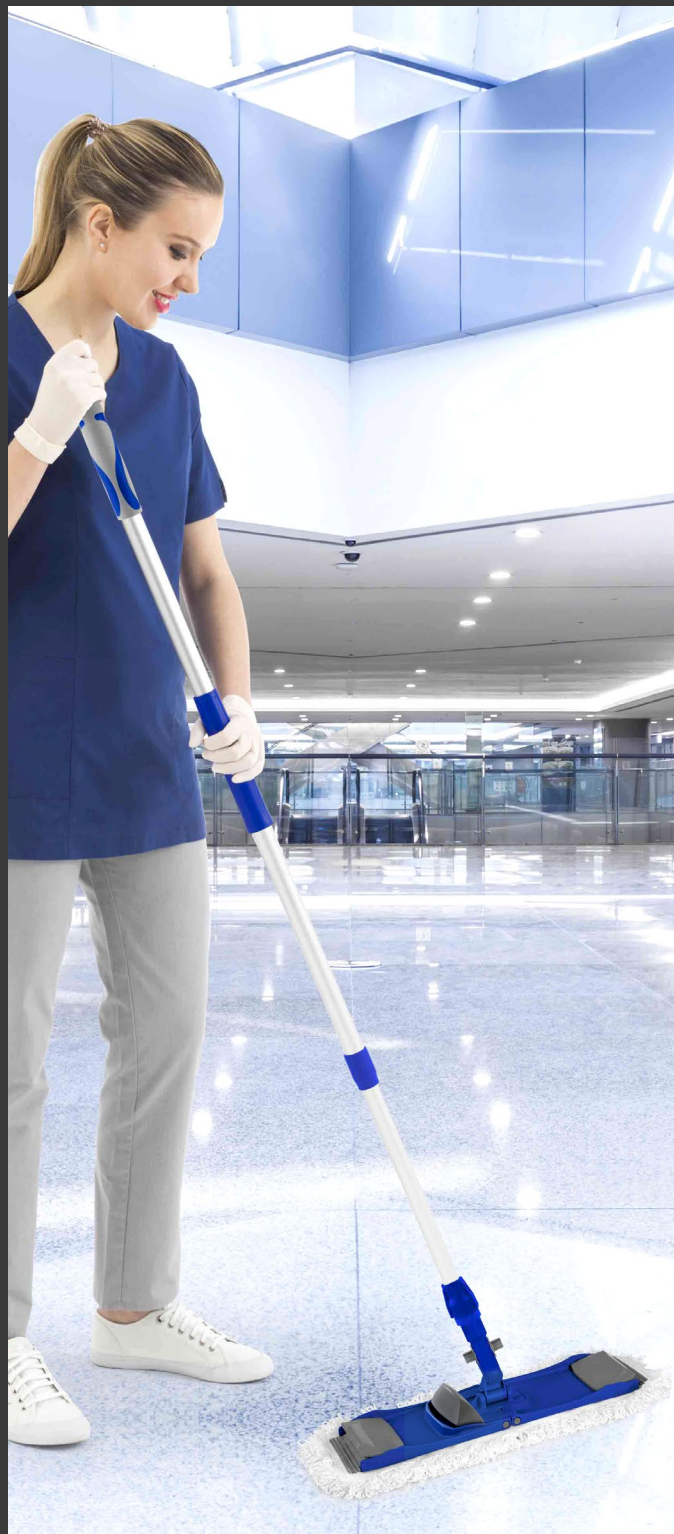


Finally, you can **lock the squeegee in the required position** in two simple steps: first you position the head at the angle you want to keep and then turn the handle knob to the right to lock it.





# OUR EXPERTS



## THE CHOICE OF FLOORING BETWEEN STRENGTHS AND WEAKNESSES

***What makes a customer choose a hard floor in your view? For example, is it mainly for aesthetic reasons? Or do they feel that this will be a practical solution for their facility?***

There are many types of flooring, each with its own technical and aesthetic characteristics, which can be used to guide the choice according to specific stylistic and functional requirements. In this regard, it is always a good idea to consider the intended use of the floor and the stresses to which it will be subjected, in addition to the purely aesthetic aspect, which is generally linked to the environment in which it will be installed. Hard floors are a solution that combines aesthetics and practicality and are therefore often considered.

***Do customers assume a hard floor will be easier to clean and maintain than a carpet? Perhaps they believe it will be more durable, too?***

It is well known that hard floors are generally easier and faster to clean than textile floors. The same applies to carpets, rugs and runners. These require more effort than more smooth surfaces like hard floors. As far as durability is concerned, it is equally well known that high traffic can compromise textile floors by wearing them out. Hard floors offer greater resistance to stress and trampling, also when they are subjected to heavy traffic. Frequent cleaning with appropriate equipment maximises their durability and preserves their value over time.

***Do hard floors give the impression of being more hygienic than textiles? Is this a strong argument for some customers?***

A smooth, non-porous surface immediately gives the idea of a more hygienic solution, as dirt cannot lodge and is easy to remove.

On the other hand, textile floors are generally difficult to clean, representing a much less hygienic and difficult to manage solution.

To achieve a high level of hygiene, it is of course essential to rely on appropriate cleaning equipment. Filmop microfibres can make the difference as they achieve excellent results in removing dirt, viruses and bacteria.

***Do factors such as a high gloss finish persuade some customers to opt for a hard floor? And are others driven by factors such as fashion or cost?***

The high-gloss finish of hard floors can guide your choice if the goal is to create an elegant, refined and timeless environment.

Cost may be a crucial factor in some contexts while in others it is added to other factors considered just as important, if not more so.

***Do hard floors deliver all these benefits: eg durability, hygiene, attractiveness etc? Or are they more prone to wear/more difficult to maintain than some customers realise?***

Because of their specific features, hard floors offer greater durability and contribute to the maintenance of high hygienic standards if there is proper care, planned over time as required.

In the same way, beauty is certainly another of their advantages. However, to maintain their appearance, it is necessary to clean them correctly and as often as necessary in order to prevent dirt from damaging them little by little and compromising their value. Each type of floor requires specific care that must be carried out with suitable equipment.

***What are the chief advantages of a hard floor in your view? What floorcare systems does Filmop offer that make them easy to clean and maintain?***

Hygiene is a main issue for us and hard floors make it easier to achieve this goal. In order to clean them, we recommend our microfibres, which are characterised by very fine filaments that can penetrate the tiniest surface porosity and remove dirt with ease. The high collection capacity allows them to effectively remove viruses and bacteria while ensuring high hygienic standards. The wide range offers many solutions to meet any need by properly treating all types of indoor and outdoor flooring. With its highly functional and ergonomic design, Globo washing system makes cleaning easier while avoiding stressful movements and unsuitable postures. Globo also stands out for a unique universal system that can be used like any traditional system (strap tape system, pockets, flaps, pockets-flaps), with greater results in terms of performance, ergonomics and hygiene.



FILMOP INTERNATIONAL SRL  
Via dell'Artigianato, 10/11  
35010 VILLA DEL CONTE  
Padova - Italy

Tel. +39 049 9325066  
Fax +39 049 9325317

[filmop@filmop.com](mailto:filmop@filmop.com)  
[www.filmop.com](http://www.filmop.com)